

Outlook Email Setup

by Autoxloo

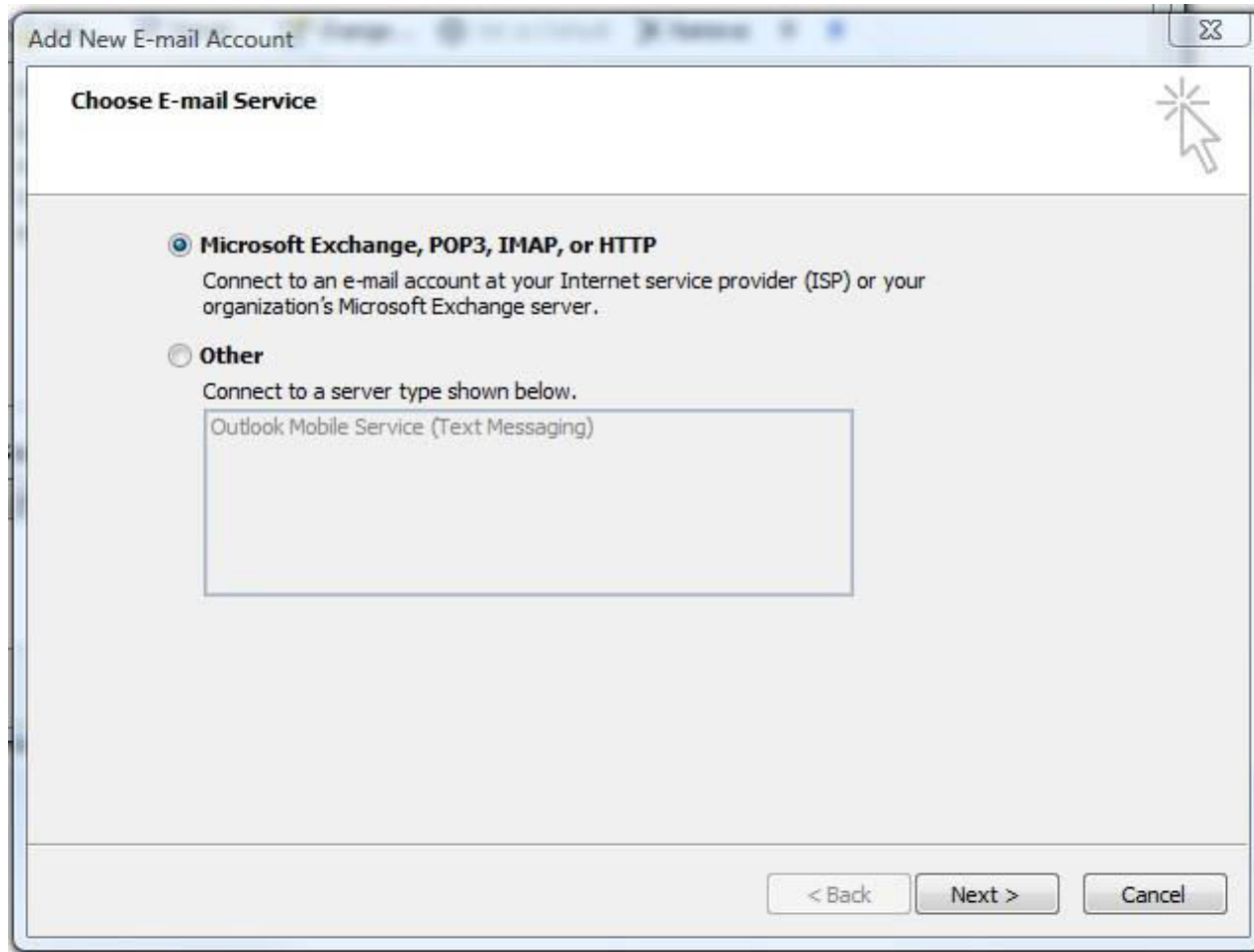
Mail Servers Information

- ▶ **Manual Settings – DEALERSHIPNAME.COM***
- ▶ **Mail Server Username:** example@DEALERSHIPNAME.com
- ▶ Password will be provided at the time of setup.
- ▶ **Incoming Mail Server:** mail.dealershipname.com
- ▶ **Outgoing Mail Server:** mail.dealershipname.com (*server requires authentication*)
- ▶ **Port 25 (or 587)**

* Replace “dealershipname” with your domain name



Choose Email Service



Auto Account Setup

Add New E-mail Account

Auto Account Setup
Clicking Next will contact your e-mail server and configure your Internet service provider or Microsoft Exchange server account settings.

Your Name:
Example: Barbara Sankovic

E-mail Address:
Example: barbara@contoso.com

Password:

Retype Password:
Type the password your Internet service provider has given you.

Manually configure server settings or additional server types

< Back Next > Cancel

Internet Email Settings

Add New E-mail Account

Internet E-mail Settings
Each of these settings are required to get your e-mail account working.

User Information

Your Name:

E-mail Address:

Server Information

Account Type:

Incoming mail server:

Outgoing mail server (SMTP):

Logon Information

User Name:

Password:

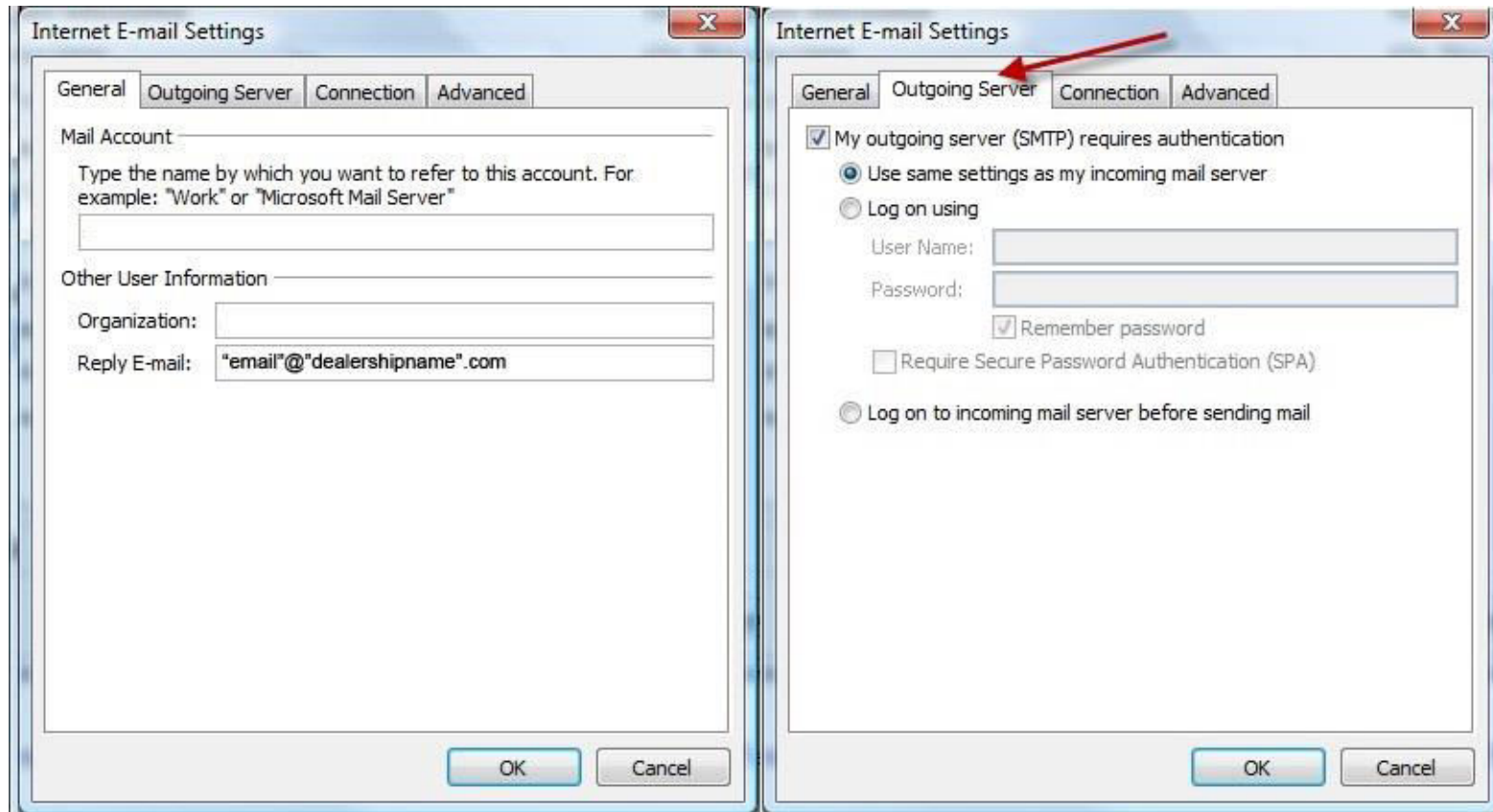
Remember password

Require logon using Secure Password Authentication (SPA)

Test Account Settings

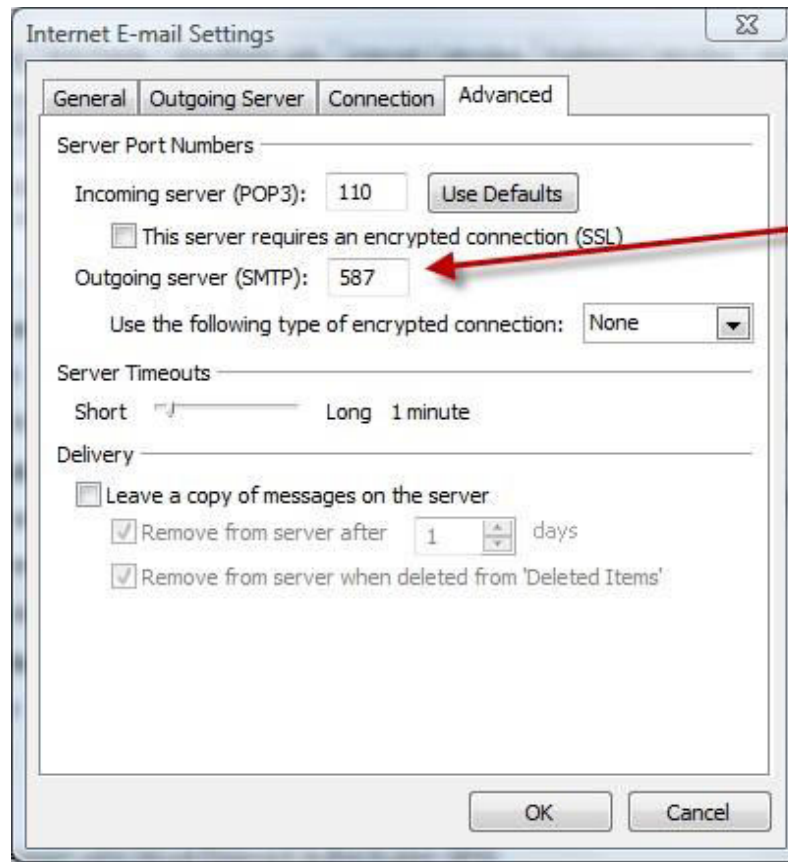
After filling out the information on this screen, we recommend you test your account by clicking the button below. (Requires network connection)

Detailed Settings



Change port number if needed

- ▶ Change port to 587 if 25 does not work.



Change from 25 to 587

Simply click OK and You're DONE!

If you still have questions, we always here to help you, just contact us:

www.autoxloo.com/contact-us.html

(727) 745-44-55

